

THE CAVE

INTRODUCTION



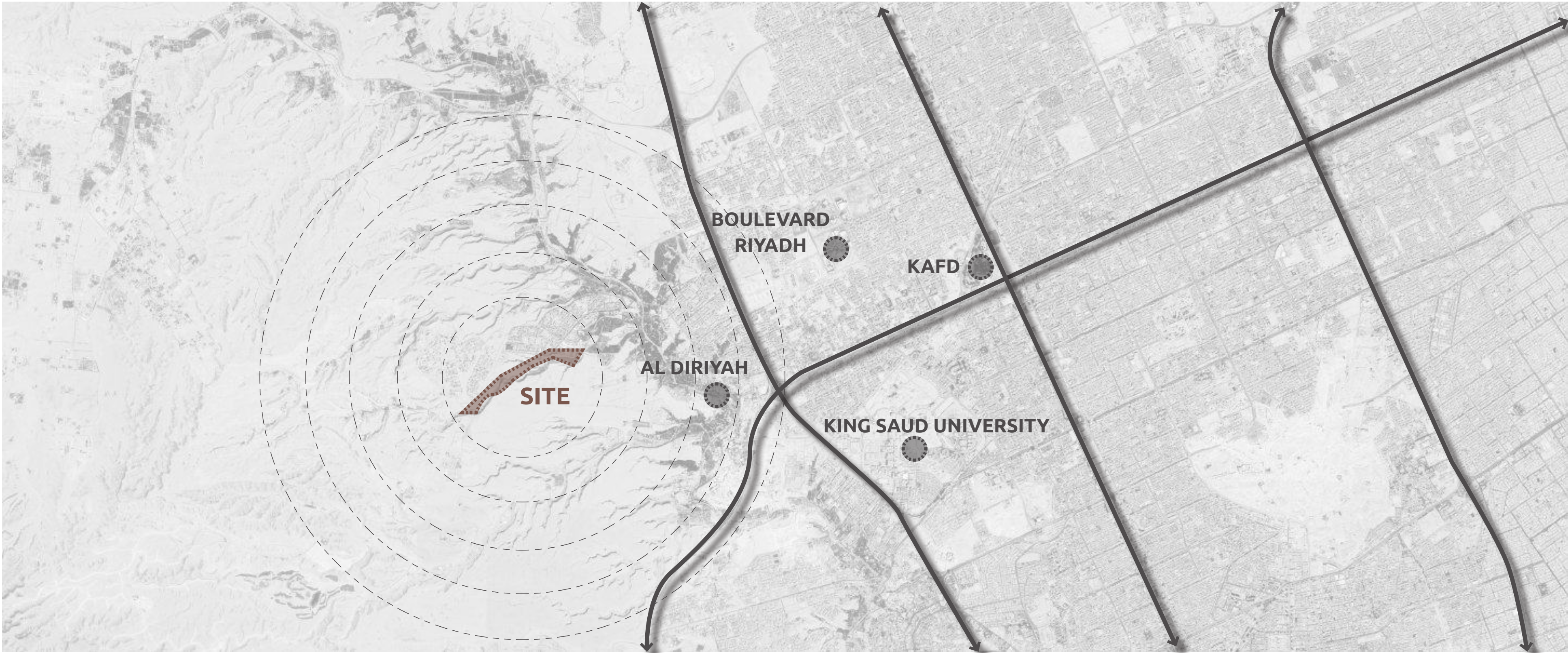
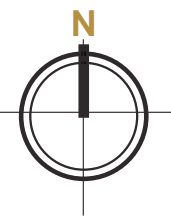
TIRAZ presents a new star in the world of entertainment and relaxation with the Cave Project, where the magnificence of luxurious designs meets the enchanting beauty of nature. This project represents a unique destination for leisure and rejuvenation, designed to be your private retreat away from the noise of urban life. Here, you will find yourself in a calm and comfortable atmosphere, allowing you to restore your energy and renew your vitality in an environment of luxury. Embark on an unforgettable journey with the Cave Project, where you can rediscover yourself



SITE LOCATION



SITE LOCATION



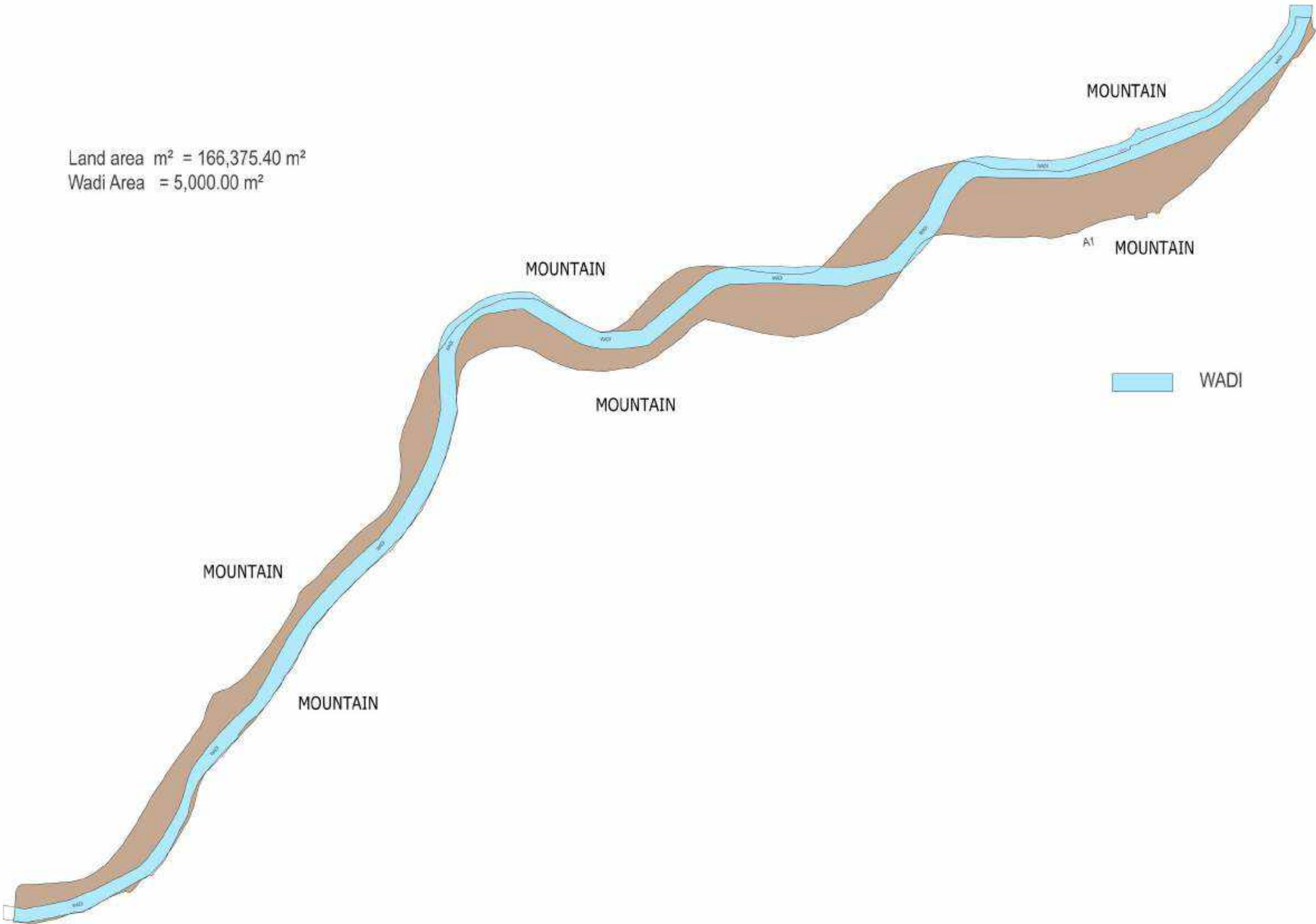
CONCEPTUAL DESIGN | REV. 03

CONCEPTUAL DESIGN

October | 2025

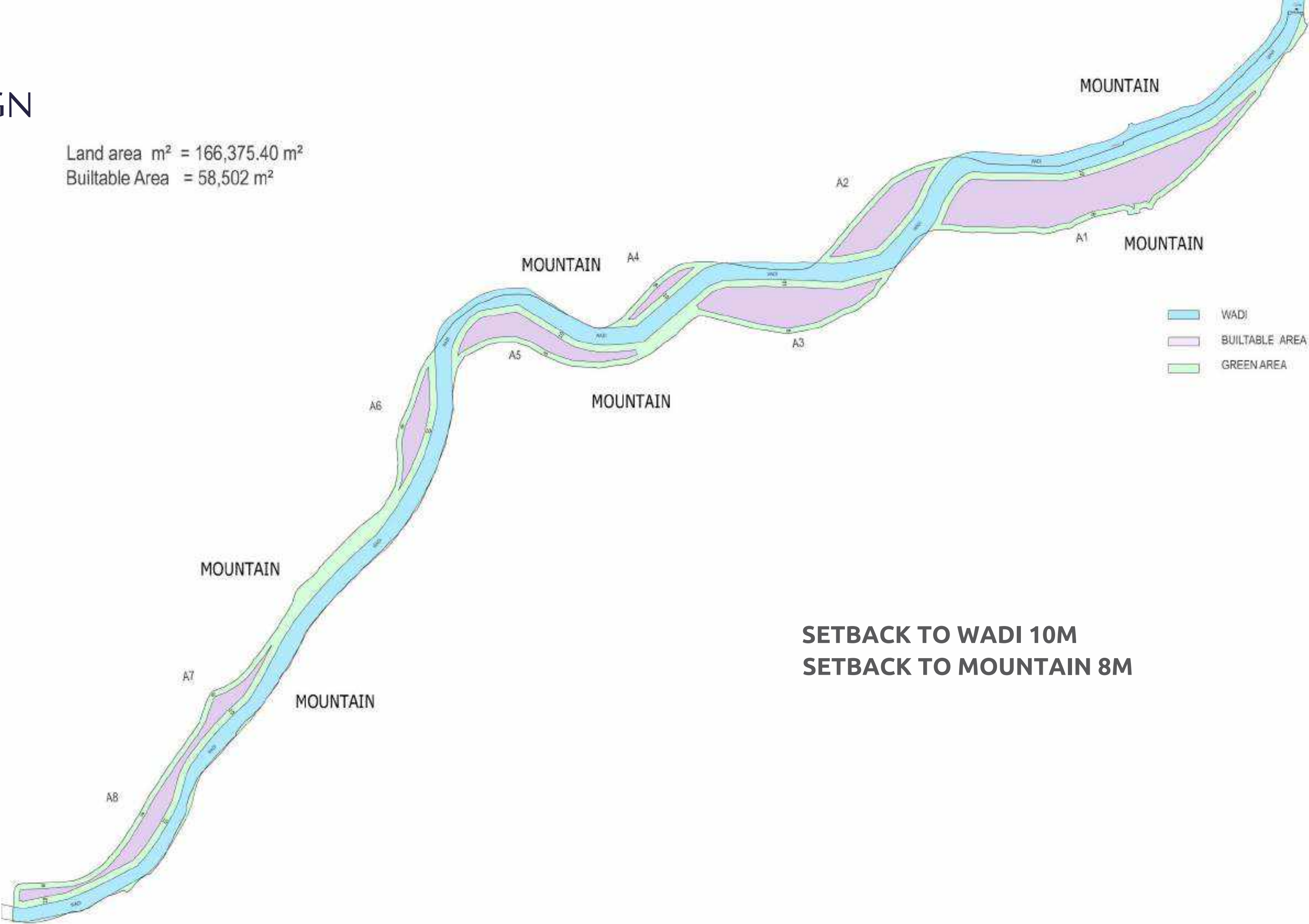
CONCEPTUAL DESIGN
WATER WAY (WADI) | sEC
SITE LAYOUT PLAN
SHOWING WADI

Land area m² = 166,375.40 m²
Wadi Area = 5,000.00 m²

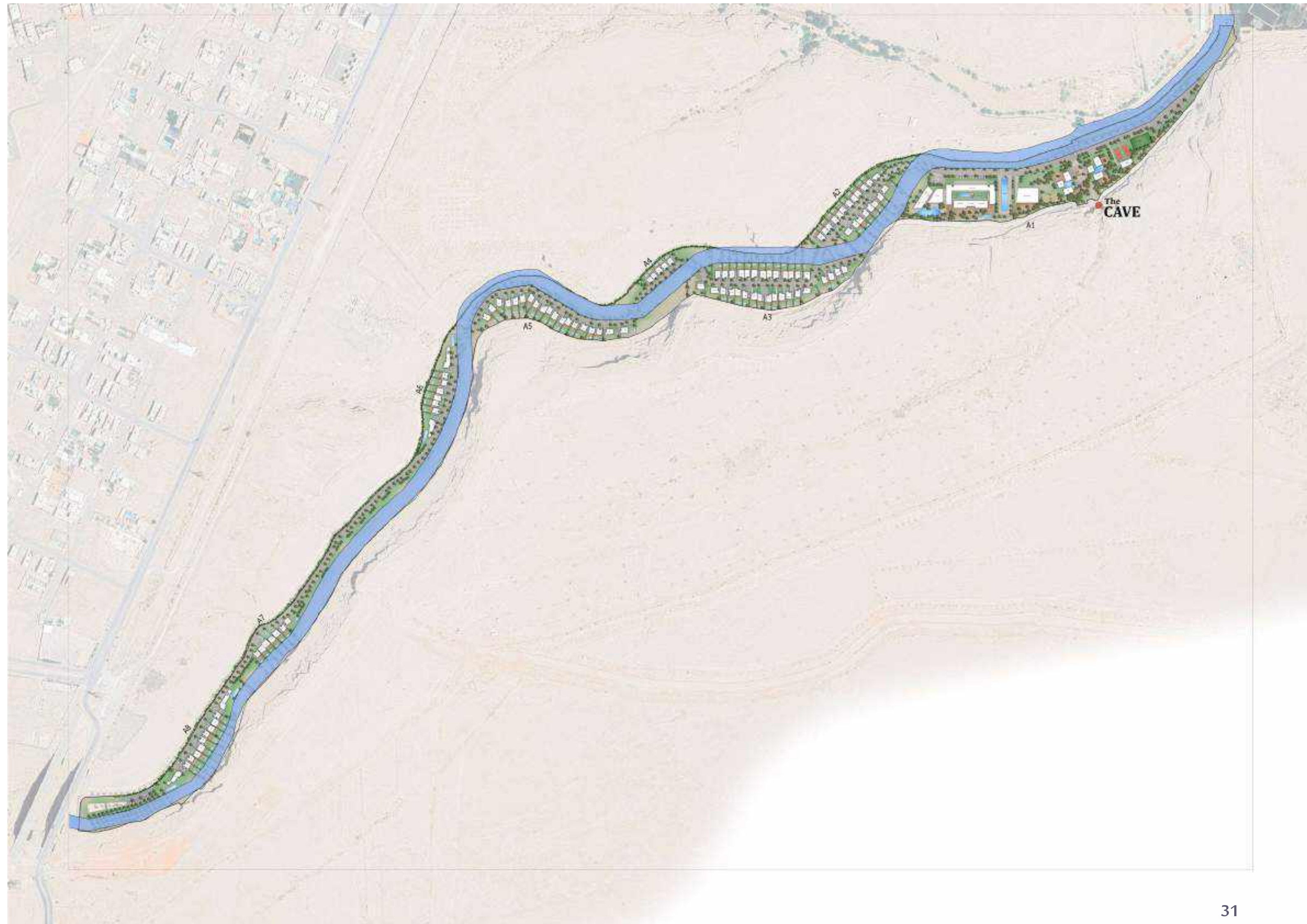


CONCEPTUAL DESIGN
SITE LAYOUT SHOWING
SETBACKS REGULATIONS

Land area m² = 166,375.40 m²
Buildable Area = 58,502 m²



CONCEPTUAL DESIGN SITE LAYOUT SHOWING WADI WITH SITE PLAN

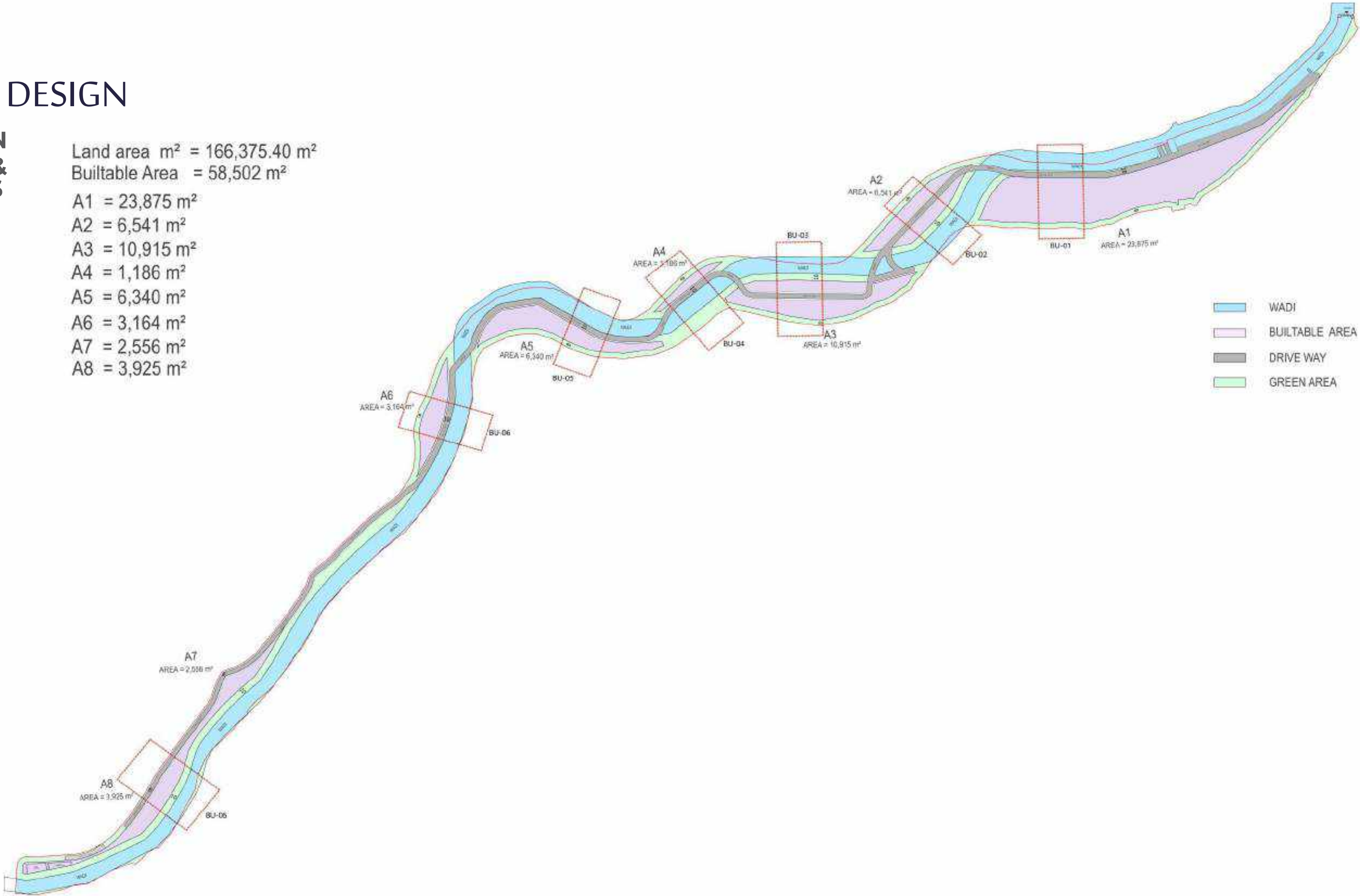


CONCEPTUAL DESIGN

SITE LAYOUT PLAN ROAD NETWORK & BUILDABLE AREAS

Land area $\text{m}^2 = 166,375.40 \text{ m}^2$
Buildable Area $= 58,502 \text{ m}^2$

- A1 = $23,875 \text{ m}^2$
- A2 = $6,541 \text{ m}^2$
- A3 = $10,915 \text{ m}^2$
- A4 = $1,186 \text{ m}^2$
- A5 = $6,340 \text{ m}^2$
- A6 = $3,164 \text{ m}^2$
- A7 = $2,556 \text{ m}^2$
- A8 = $3,925 \text{ m}^2$



CONCEPTUAL DESIGN
SITE MASTER PLAN



ENTRANCES

LANDPLOT AREA

166,000 SQM

TOTAL NUMBER OF
CHALET

109

SINGLE ROOMS

36



CONCEPTUAL DESIGN

LAYOUT BLOW UPS | 01

BLOW UP

A1

PART 01



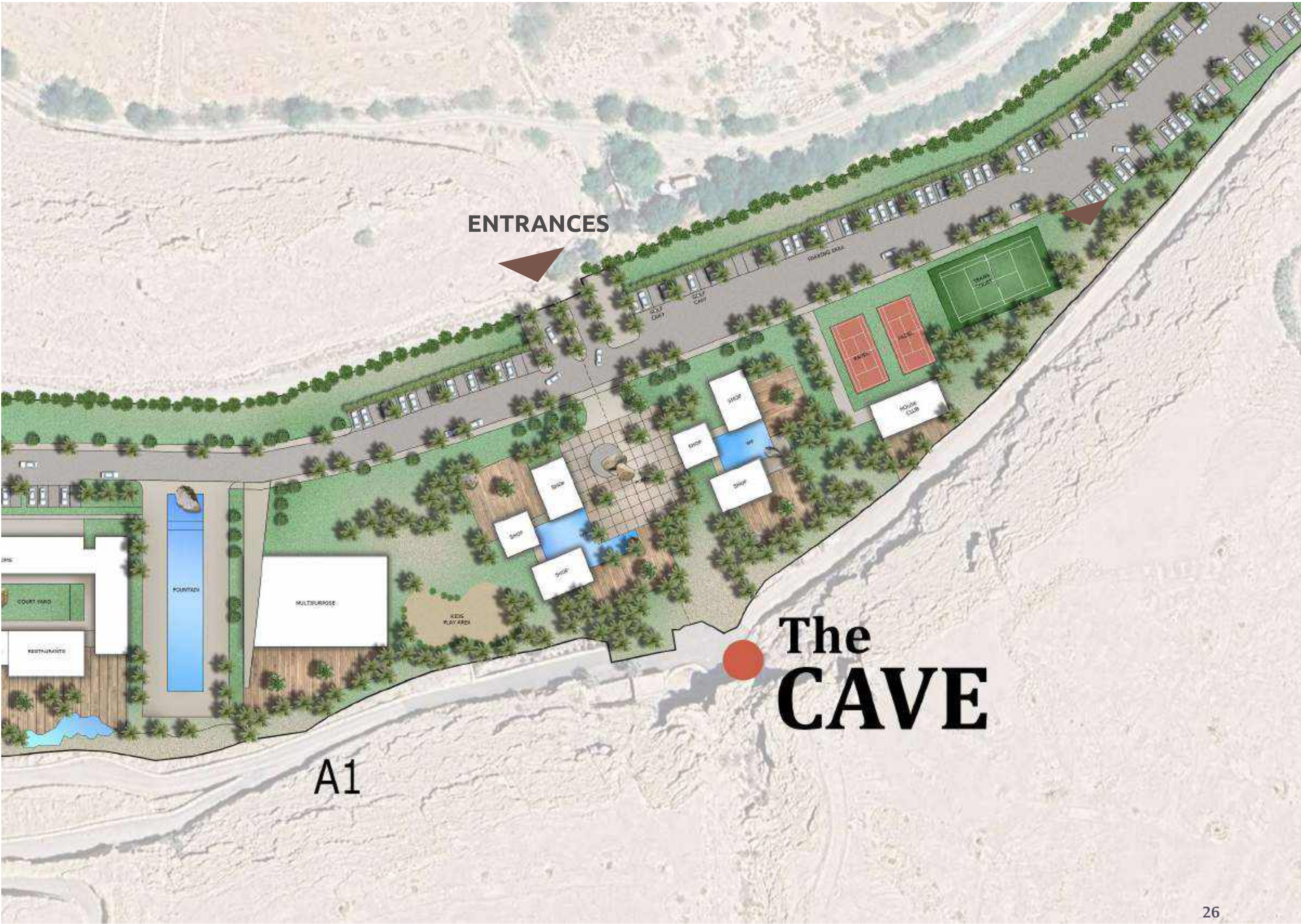
CONCEPTUAL DESIGN

LAYOUT BLOW UPS | 01

BLOW UP

A1

PART 02



CONCEPTUAL DESIGN
LAYOUT BLOW UPS | 01
BLOW UP
A1

RT 03



CONCEPTUAL DESIGN
LAYOUT BLOW UPS | 02

BLOW UP A2



CONCEPTUAL DESIGN
LAYOUT BLOW UPS | 03

BLOW UP A3



CONCEPTUAL DESIGN
LAYOUT BLOW UPS | 04

BLOW UP A4



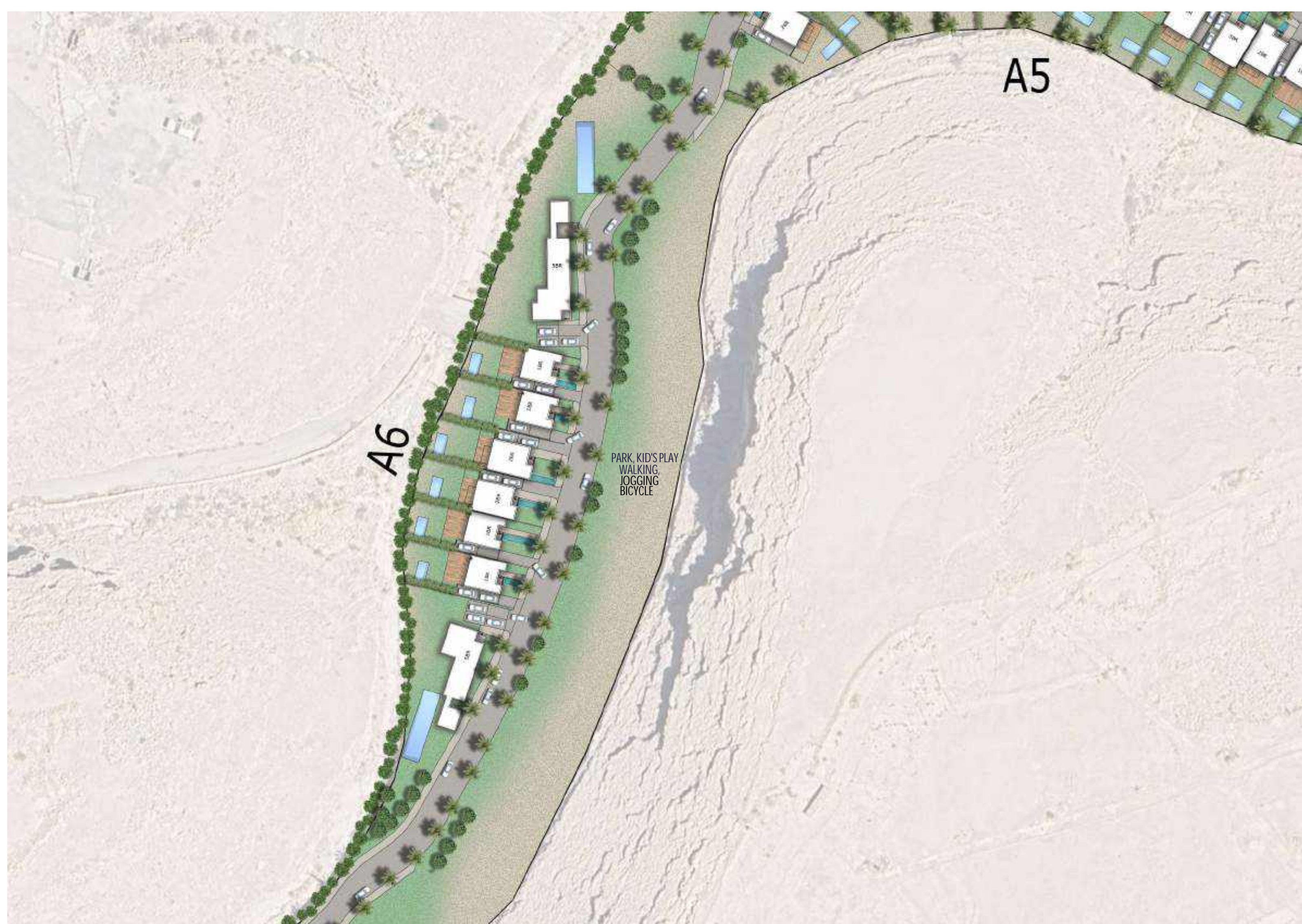
CONCEPTUAL DESIGN
LAYOUT BLOW UPS | 05

BLOW UP A5



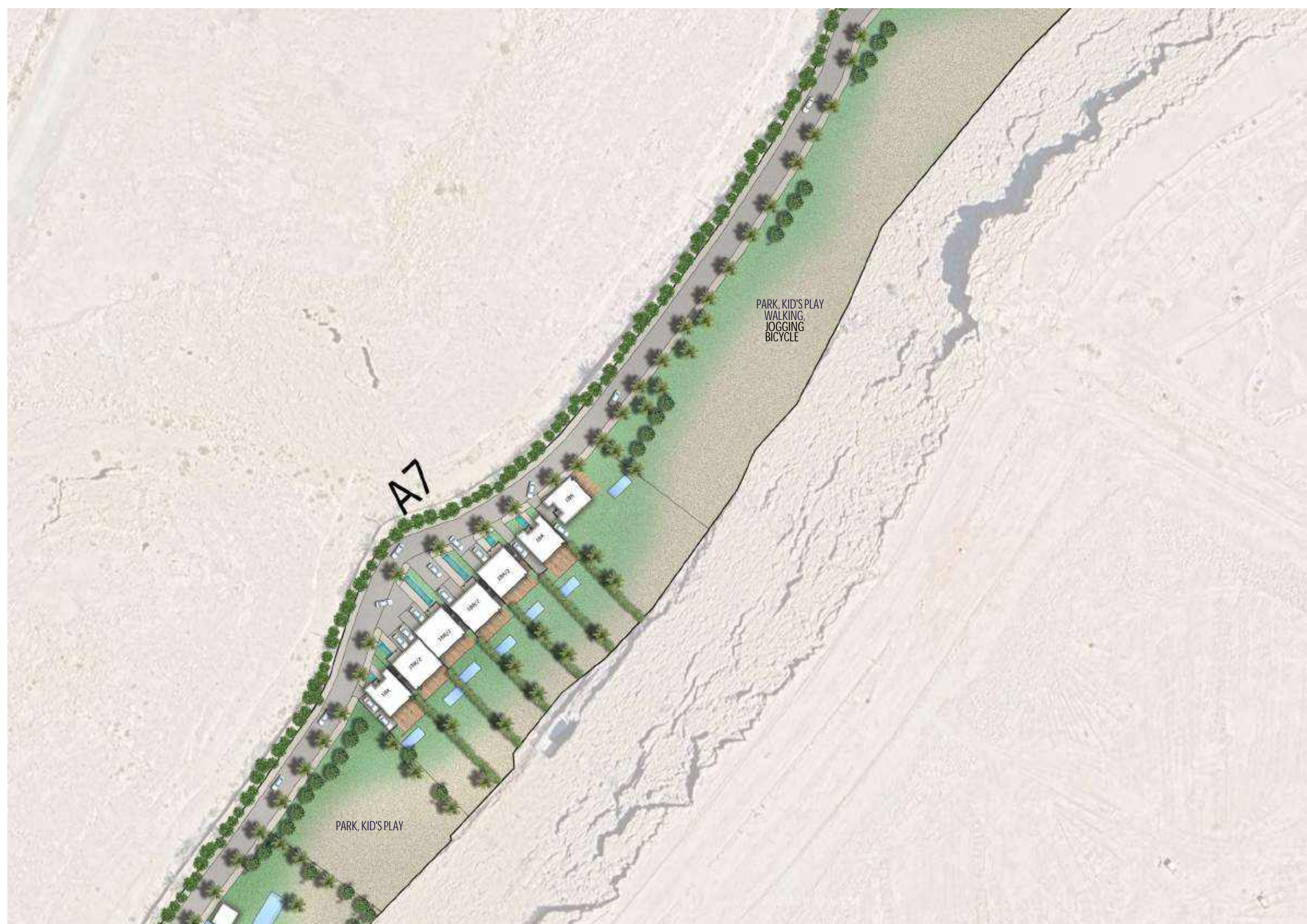
CONCEPTUAL DESIGN
LAYOUT BLOW UPS | 06

BLOW UP A6



CONCEPTUAL DESIGN
LAYOUT BLOW UPS | 07

BLOW UP A7



CONCEPTUAL DESIGN
LAYOUT BLOW UPS | 08

BLOW UP A8



1BR

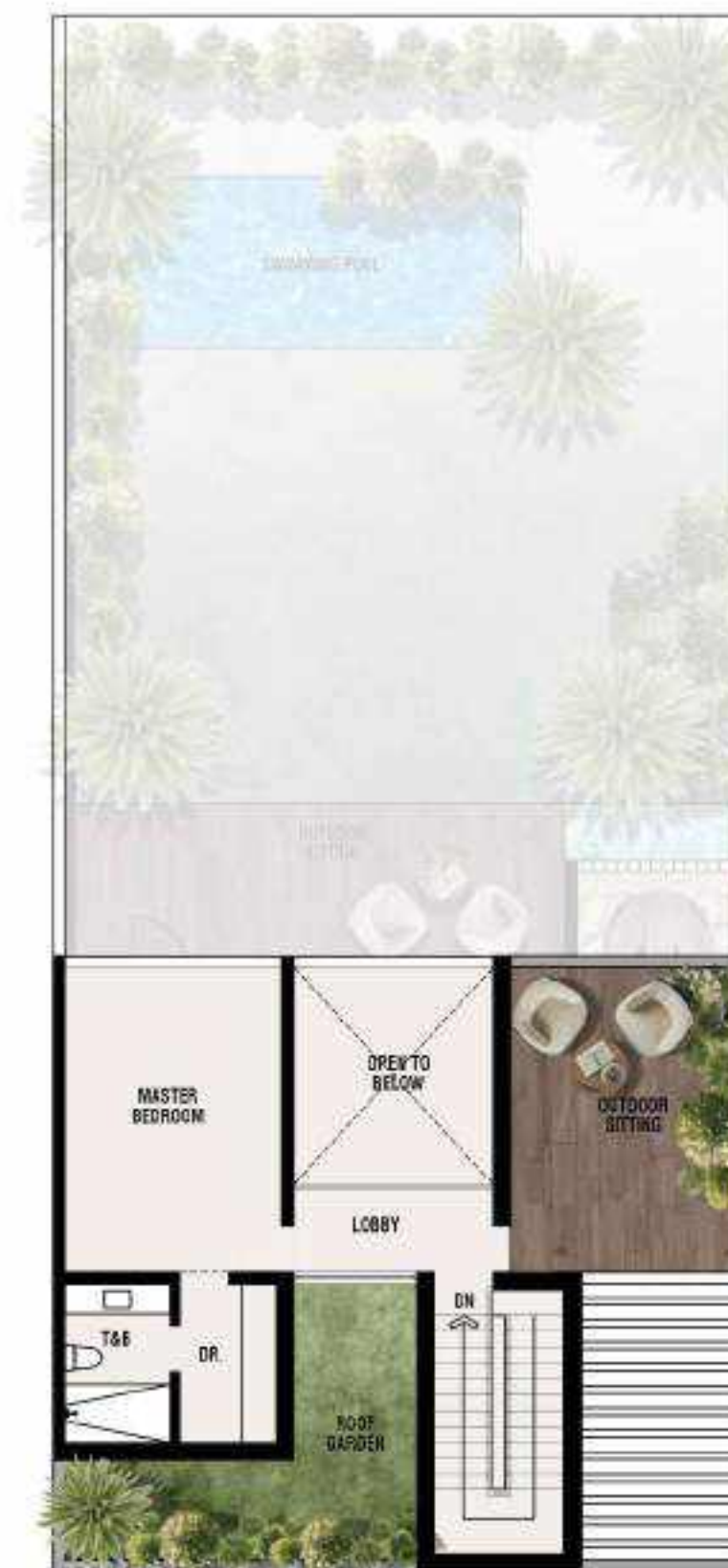
FLOOR PLANS

GF + FF. AREA = 150m²



GROUND FLOOR (1BR)

BUA. = 94.50 m²



FIRST FLOOR (1BR)

BUA. = 55.50 m²



1BR
3D RENDERS
GF. + FF. AREA = 150m²



1BR

3D RENDERS



2BR

FLOOR PLANS

GF+FF AREA =196.67m²



GROUND FLOOR PLAN



FIRST FLOOR PLAN



2BR
3D RENDERS
GF+FF AREA =196.67m²



2BR

3D RENDERS



3BR

FLOOR PLANS

GF+FF AREA = 204.37m²



GROUND FLOOR PLAN



FIRST FLOOR PLAN



3BR

3D RENDERS

GF+FF AREA = 204.37m²



3BR

3D RENDERS



1BR/2

FLOOR PLANS

GF+FF AREA = 223.50m²



GROUND FLOOR PLAN



FIRST FLOOR PLAN

1BR/2

3D RENDERS

GF+FF AREA = 223.50m²



1BR/2

3D RENDERS



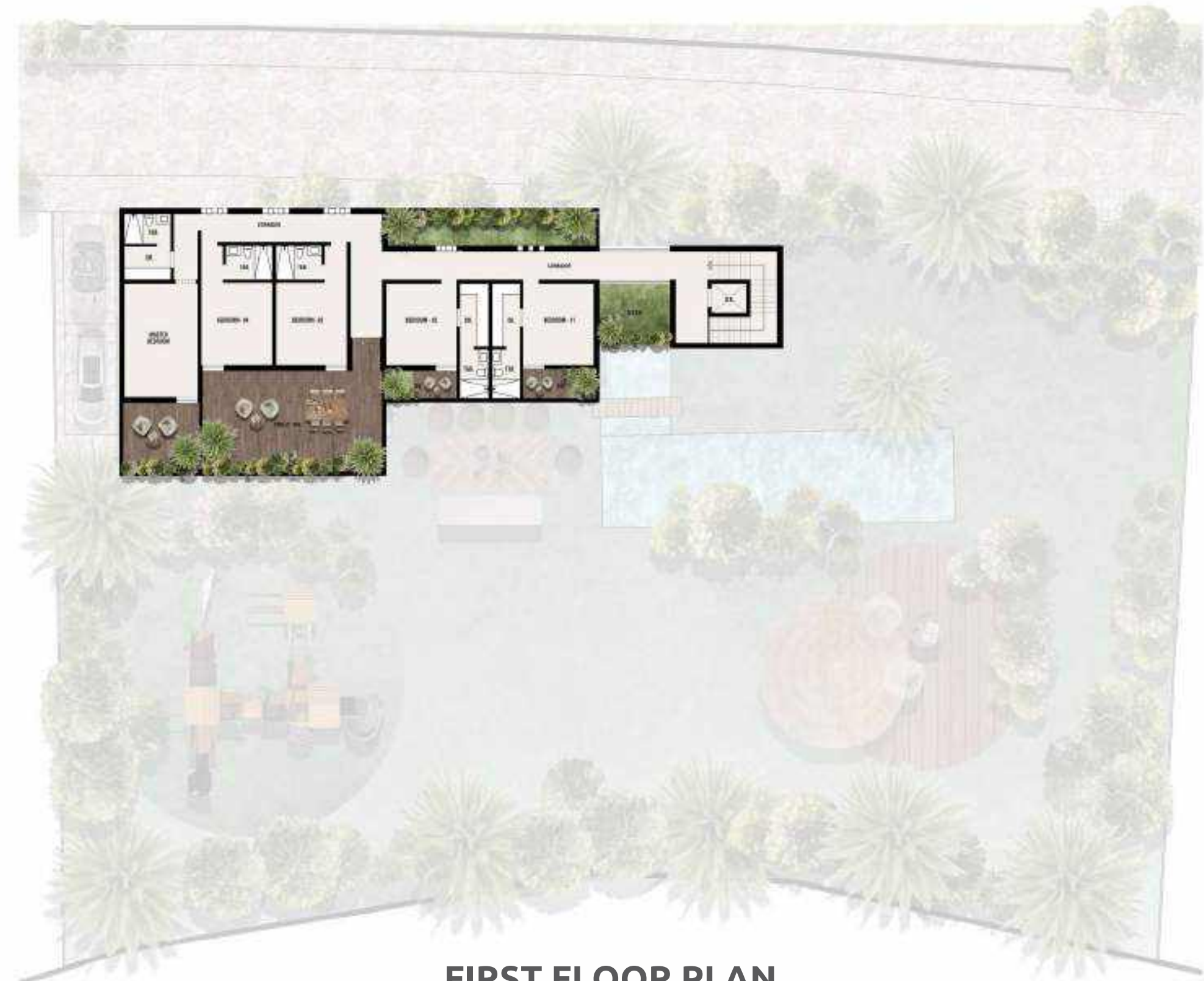
5BR

FLOOR PLANS

GF+FF AREA = 491.70m²



GROUND FLOOR PLAN



FIRST FLOOR PLAN

5BR

3D RENDERS

GF+FF AREA = 491.70m²





RESIDENTIAL AREA SITE 3D IMAGES



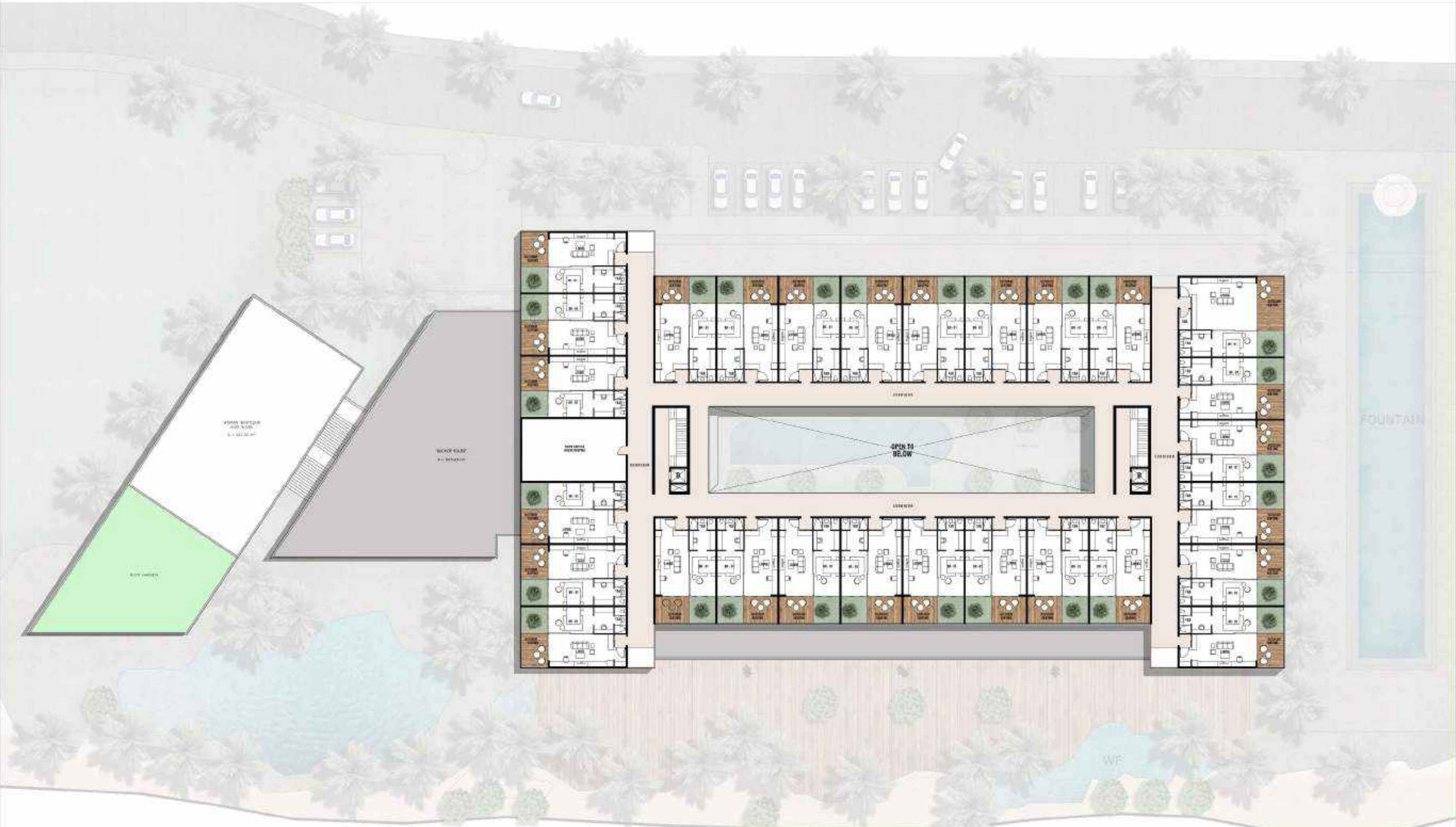
RESIDENTIAL AREA SITE 3D IMAGES

SINGLE
ROOM
BUILDING



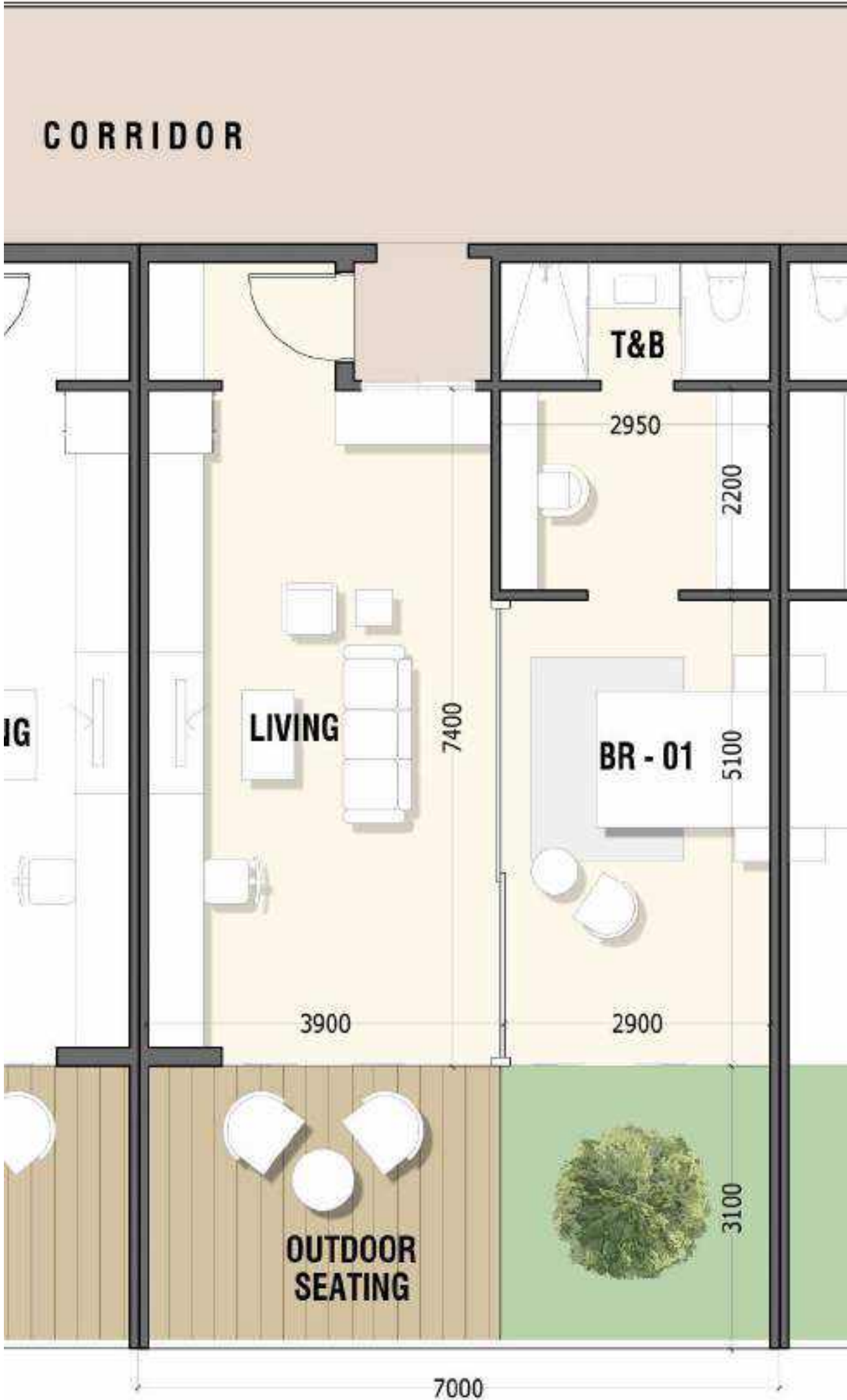
GROUND FLOOR PLAN
4,615.00 M²

SINGLE
ROOM
BUILDING



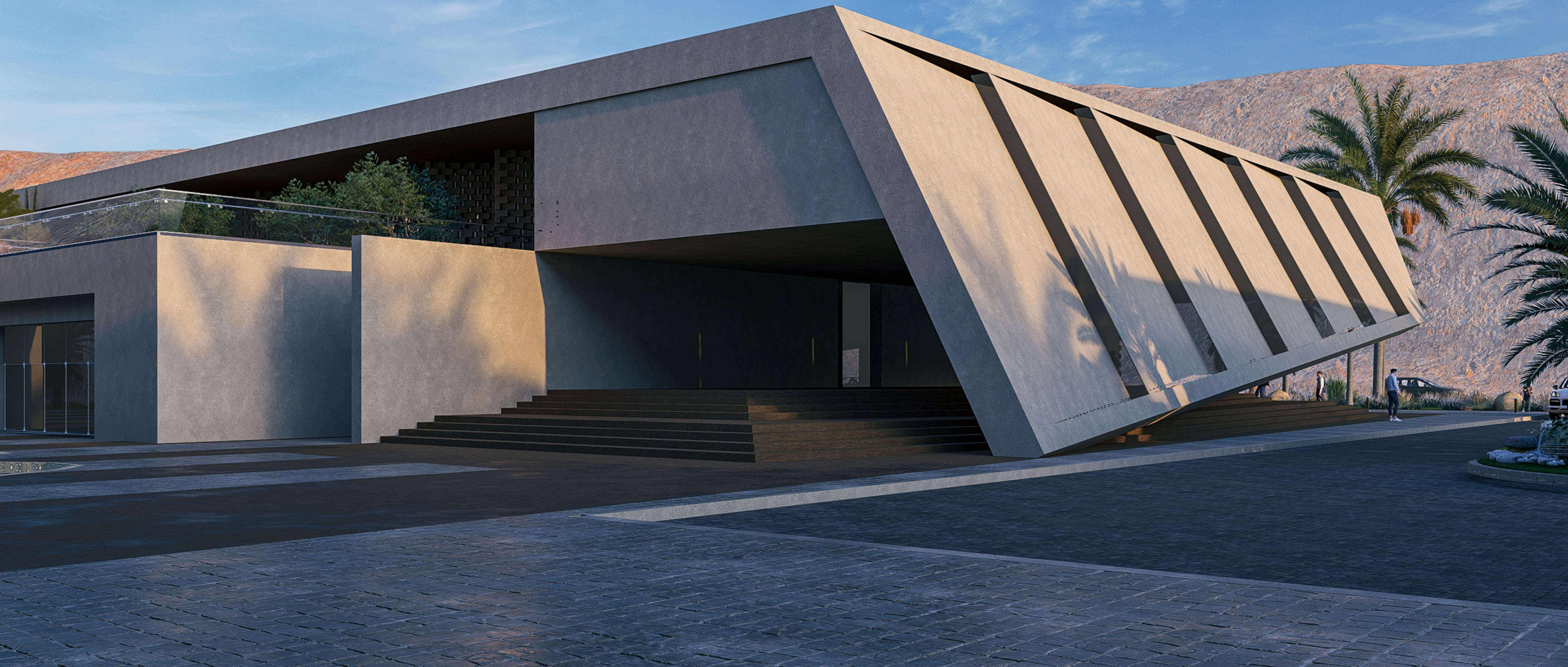
FIRST FLOOR PLAN
3,187.00 M²

SINGLE
ROOM
BUILDING



BLOW-UP PLAN
SINGLE ROOM

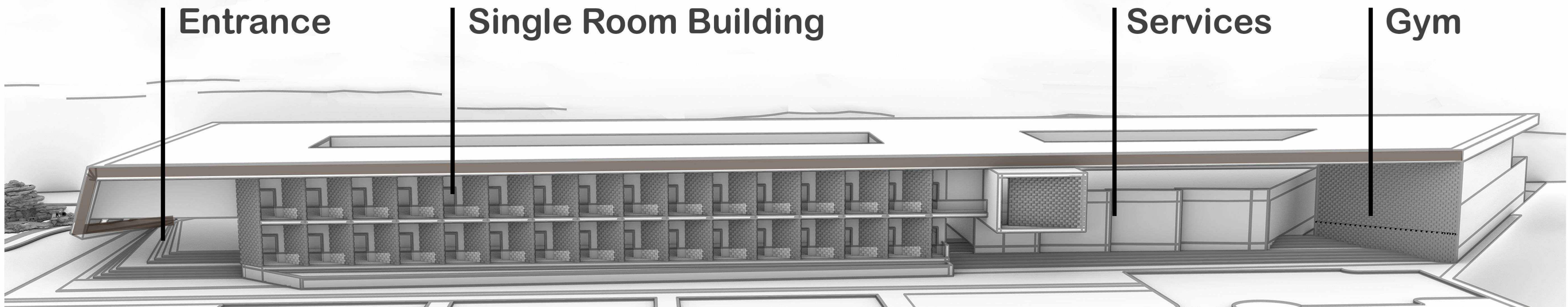
Single Room Building





Single Room Building

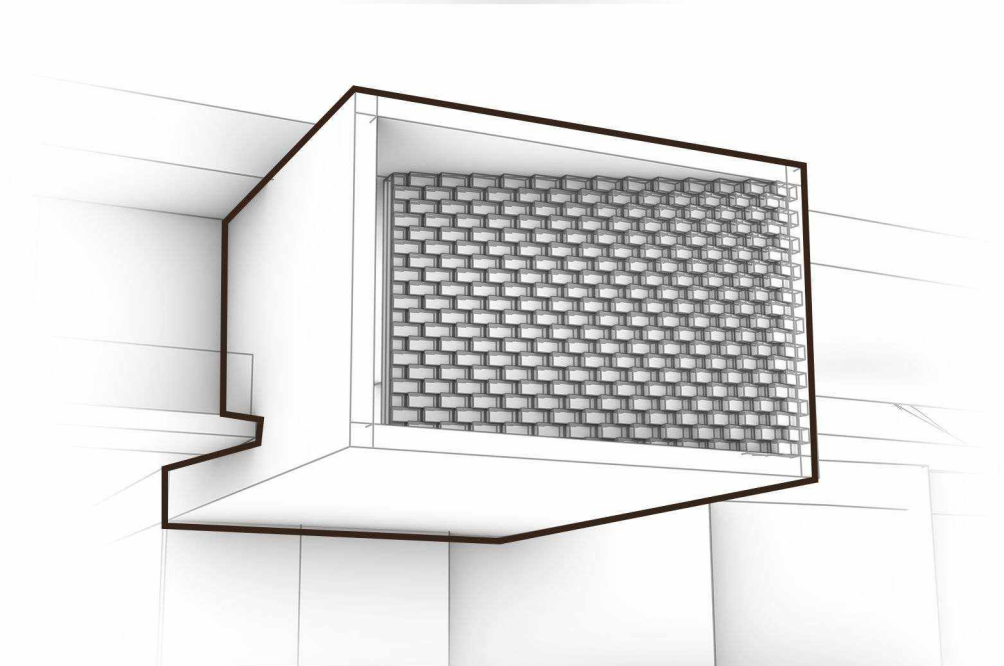
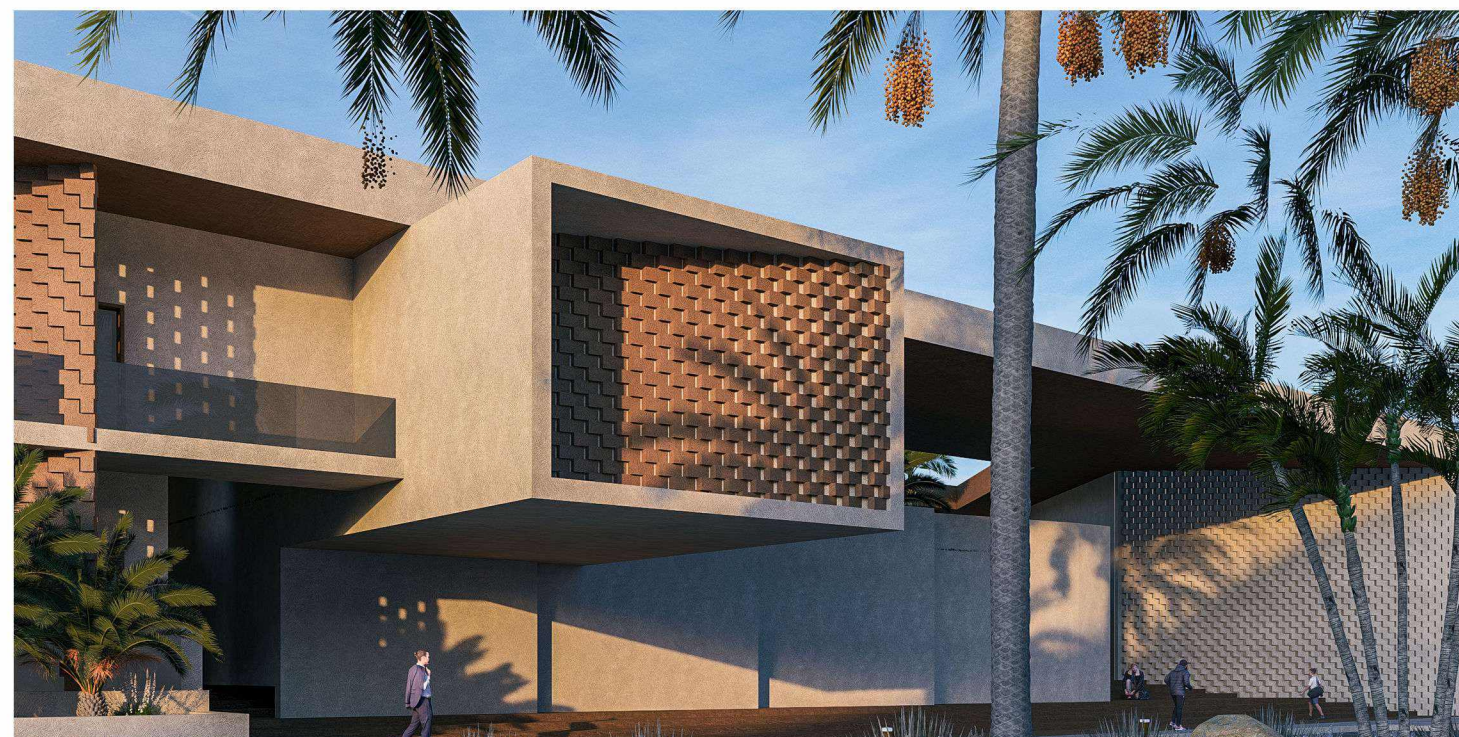
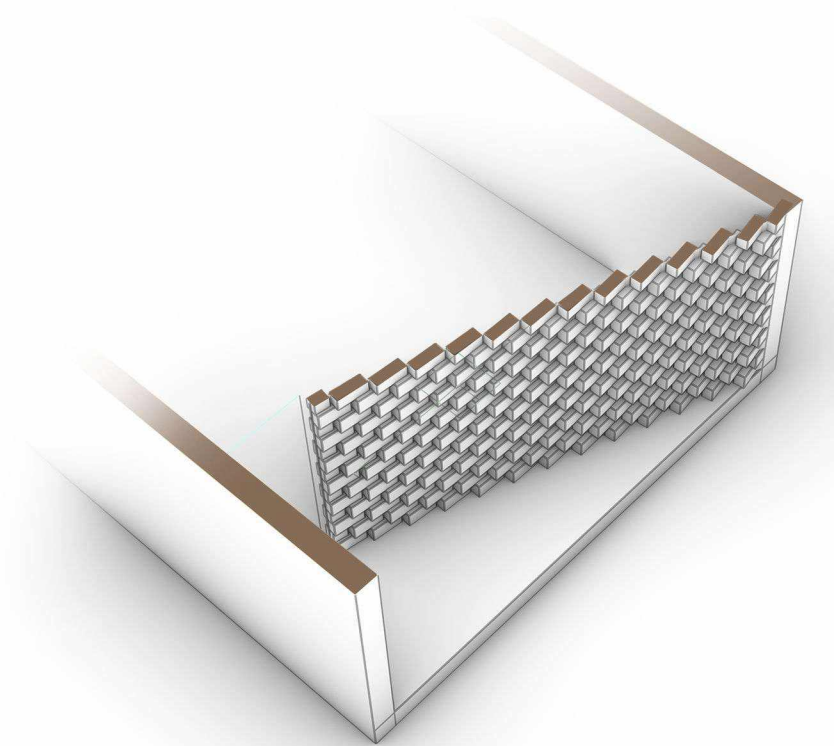
This architectural elevation presents a unified linear concept, seamlessly integrating guest rooms, service areas, and gym facilities within a singular, streamlined frame. The repetitive façade elements provide a rhythmic aesthetic, while strategically placed fenestration suggests distinct programmatic zones within the overarching form.





Single Room Building

The massing features a bold, horizontal cantilever that creates a deep, shaded entryway and circulation space below. This dramatic projection is a key element of the design, providing solar control by blocking high-angle sun from the lower level façade, a critical function in sun-drenched environments. The clean, rectilinear volumes are balanced against the natural, sloping topography in the background, creating a dialogue between the built form and the landscape.



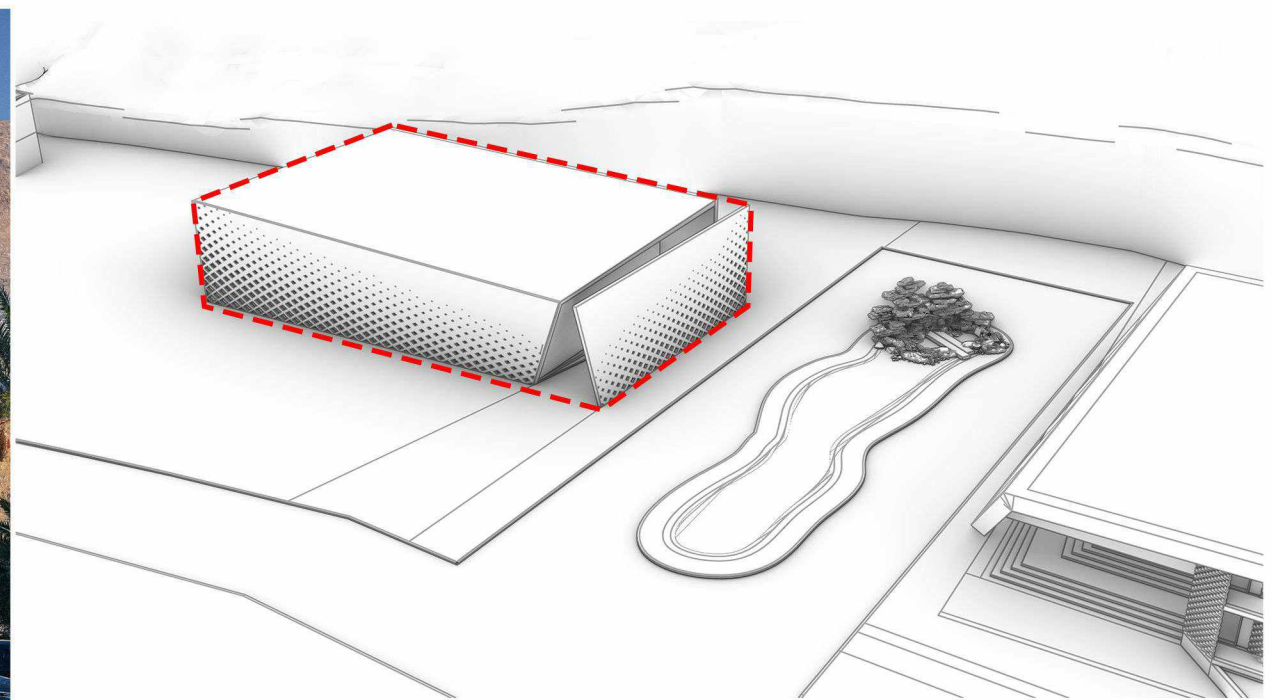
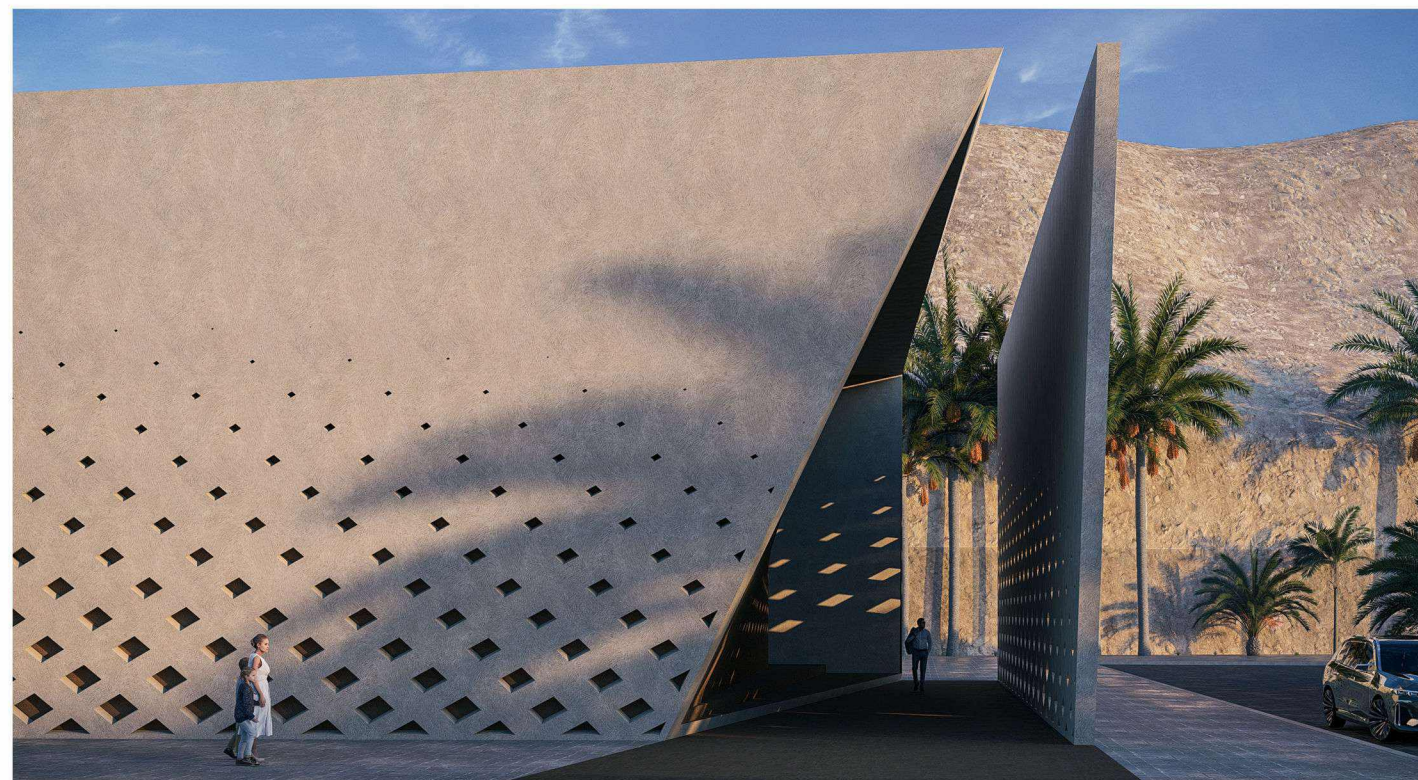
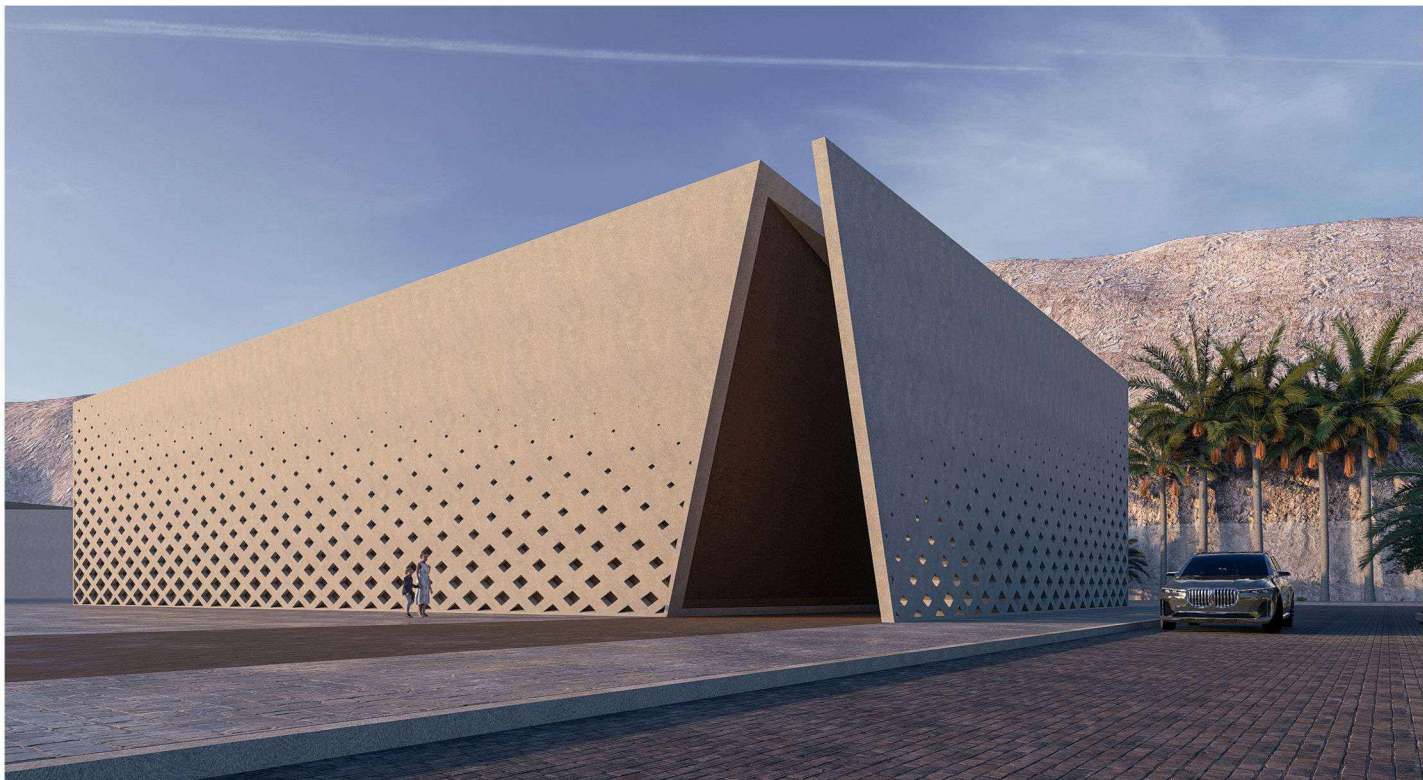
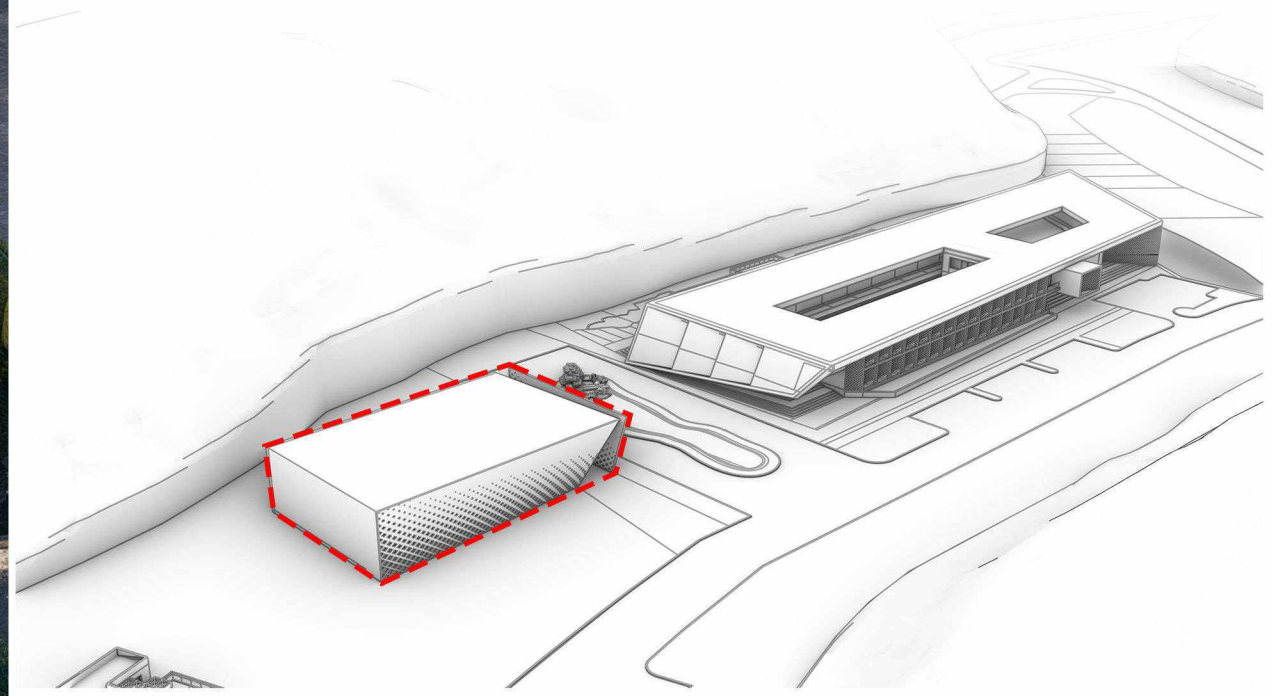
Multi Purpose Hall

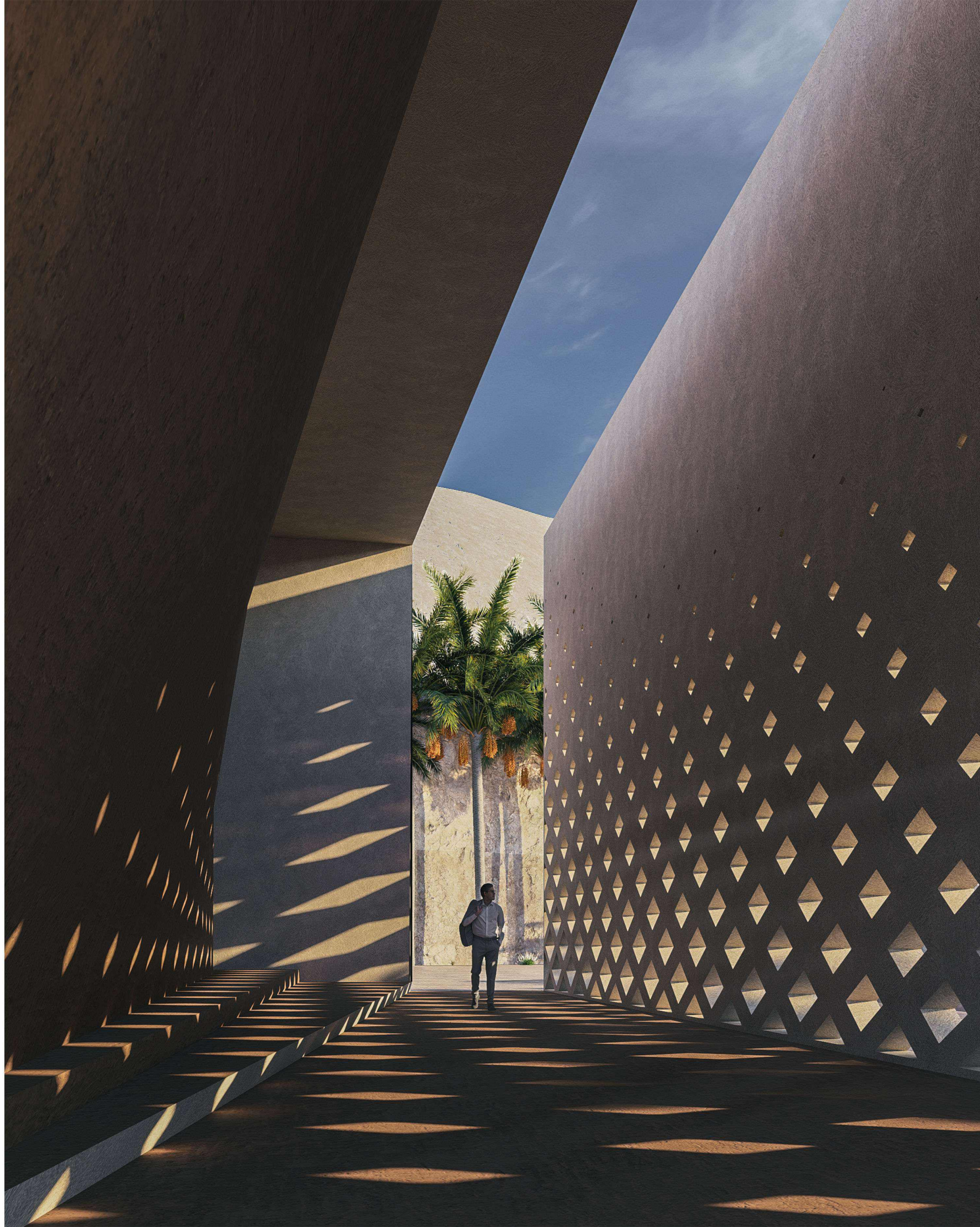




Multi Purpose Hall

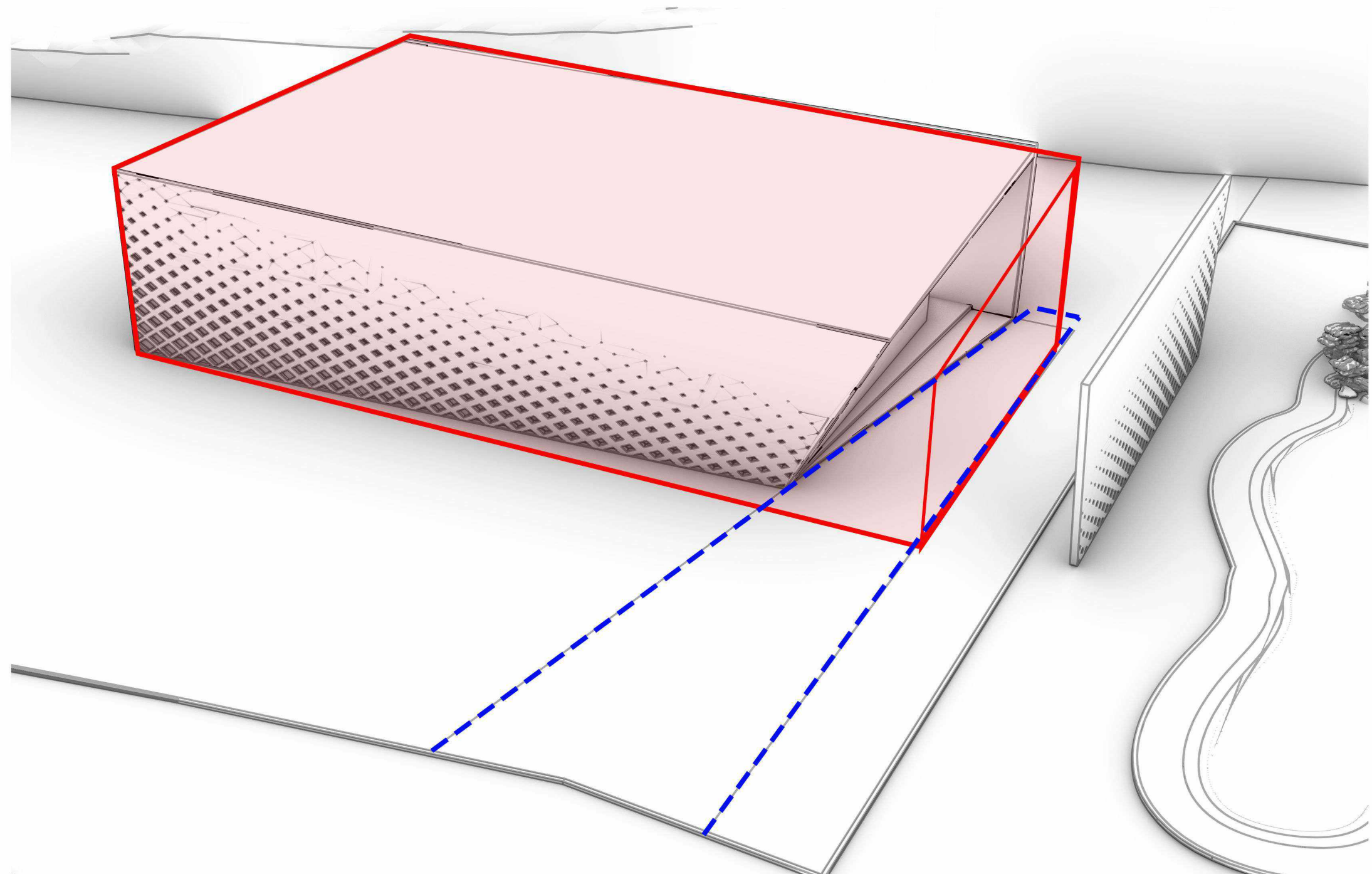
The multipurpose hall is embedded within the mountain, forming a commercial zone that blends with its natural context. A sharp-edged, slanted entrance, parametric pattern enhances the dialogue between architecture and nature.





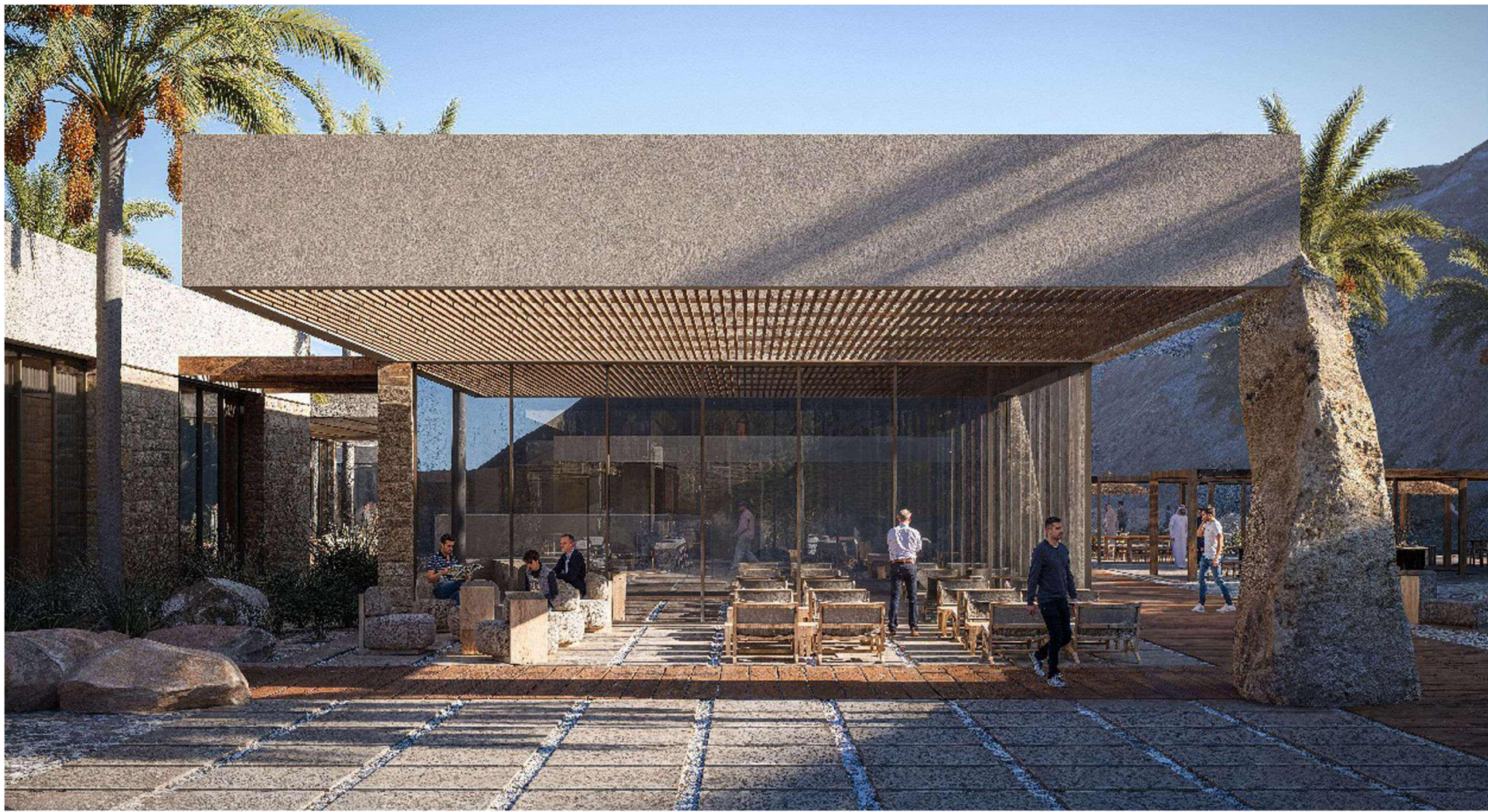
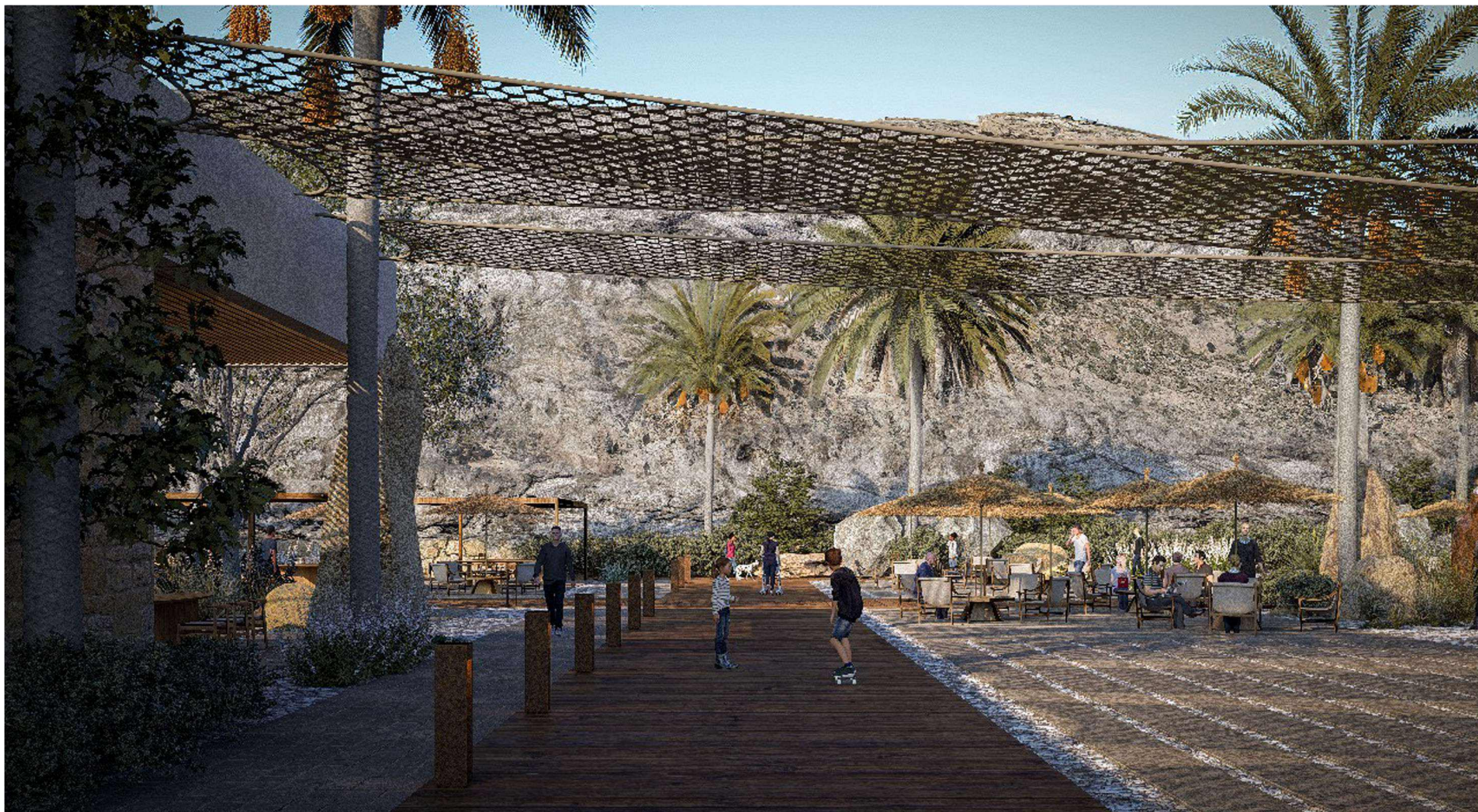
Multi Purpose Hall

Carved into the mountain, the hall's narrowing, slanted entrance creates a guided transition from commercial zone to nature, directing the visitor toward a framed mountain view. A parametric screen wall further strengthens the harmony between natural form and architectural expression





COMMERCIAL AREA 3D VIEW



COMMERCIAL AREA 3D VIEW



COMMERCIAL AREA 3D VIEW



COMMERCIAL AREA 3D VIEW



COMMERCIAL AREA 3D VIEW

